

CERTIFICATE OF LOCATION OF GOVERNMENT CORNER

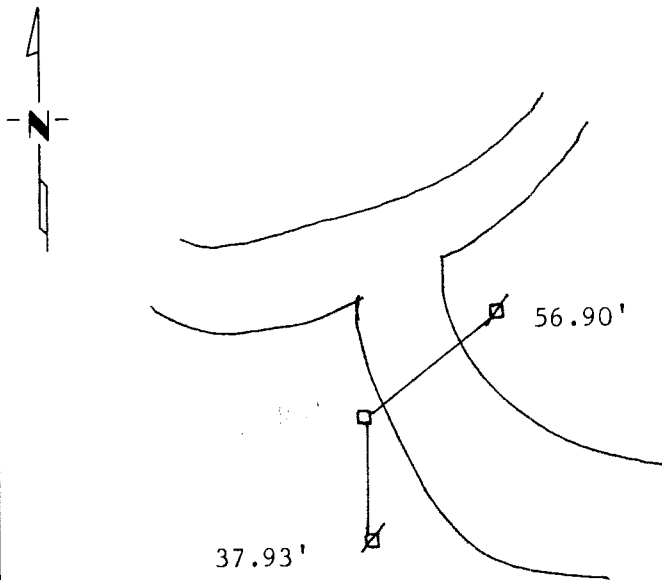
NORTH EAST Corner of Section 11, Township 106, Range 42, 5th P.M.

STATE OF MINNESOTA, County of MURRAY

At the corner location shown on the sketch:

- On 10/4/1991 found a Concrete monument 24" down with a cut off fence post
DATE
on top of it put 5/8" rerod w/seal on top of mpmument.
 left monument as found, lowered monument, removed monument (explain)
- On 10/4/1991 placed a 5/8" rerod w/seal on top of monument.
DATE

SKETCH OF REFERENCE TIES



Power Pole nail and seal N 56.90'
 Nail and seal in power pole SE 37.93'

Statement of evidence relative to this corner location is on back of page.

I hereby certify that this document and the data contained herein was prepared by me or under my direct supervision.

Agla C. Mooney 10-15-1991
SIGNATURE DATE

Registration No. 11993

- Land Surveyor, Professional Engineer
- County Surveyor, County Engineer

OFFICE OF THE COUNTY RECORDER

County of _____

I hereby certify that this document was filed in the Co. Recorders office at _____ .M. on the _____ day of _____ A.D., 19 _____

County Recorder _____

By _____, Deputy

DOCUMENT NO. _____